



Zhuzhou Ruiao Tungsten Carbide Co.,Ltd

Tel: +86 18307332261 Email: info@zzcarbide.com

Grade	Density g/cm ³	Hardness (HRA)	T.R.S (Mpa)	Grain Size(um)	Composition(%)	Equal to ISO
YL10.2	14.4~14.6	≥92.2	≥4000	0.6~0.8	10% CO 90% WC	K30
YG6X	14.85~15.0	≥92.0	≥1860	0.8~1.0	6% CO 94% WC	K10
YG15	14.0~14.1	≥85.0	≥2800	1.2~2.0	15% CO 85% WC	/
YG10	14.5~14.6	≥85.5	≥2600	1.2~2.0	10% CO 90% WC	K20
YG8	14.65~14.85	≥89.5	≥2320	1.2~2.0	8% CO 92% WC	K20
YG6	14.85~15.05	≥90.0	≥2150	1.2~2.0	6% CO 94% WC	K10

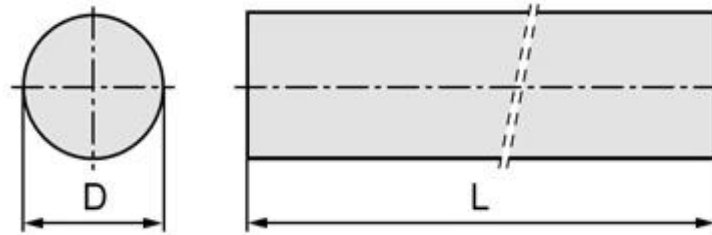
Sphericity tolerance & Circular run-out for Grounded Tungsten Carbide Rod :

Diameter	Surface Roughness	Sphericity	Circular run-out
2--6 mm	RA0.04	0.001	↑0.1
6.5-10 mm	RA0.04	0.001	↑0.1
10.5-14 mm	RA0.04	0.002	↑0.1
14.5-20 mm	RA0.04	0.004	↑0.05
>20 mm	RA0.04	0.005	↑0.03

ISO 286-2 Carbide Round Bar Tolerances "h Series" in Millimeters :

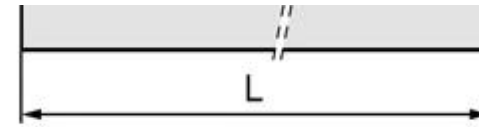
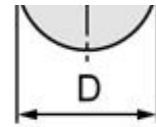
Diameter	h4	h6	h9	h11
0-3.0mm	0/-0.003	0/-0.006	0/-0.025	0/0.006
3.001-6.0mm	0/-0.004	0/-0.008	0/-0.03	0/0.008
6.001-10.0mm	0/-0.004	0/-0.009	0/-0.036	0/0.009
10.001-18.0mm	0/-0.005	0/-0.011	0/-0.043	0/0.011
18.001-30.0mm	0/-0.006	0/-0.013	0/-0.013	0/0.013
30.001-50.0mm	0/-0.007	0/-0.016	0/-0.052	0/0.016
50.001-60.0mm	0/-0.008	0/-0.019	0/-0.062	0/0.019

Unground Rods

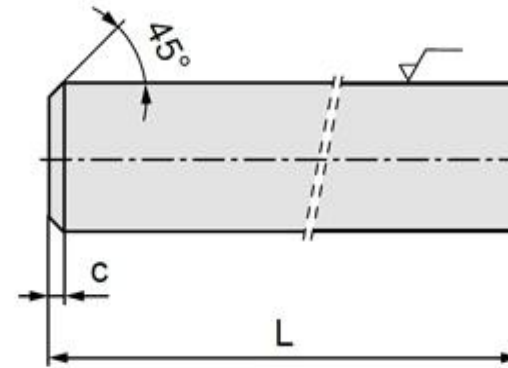
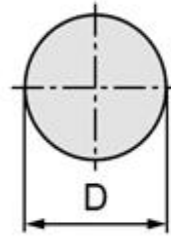


Ground Rods

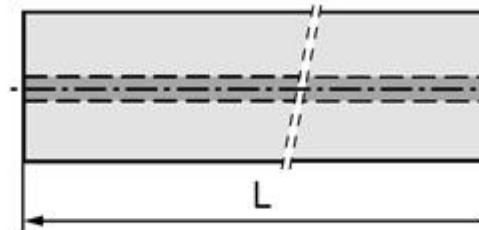
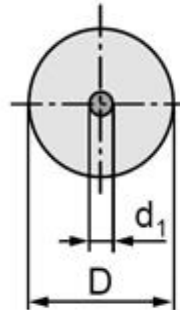




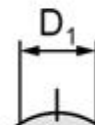
Ground Rods with Chamfer

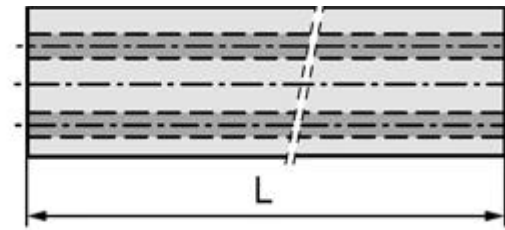
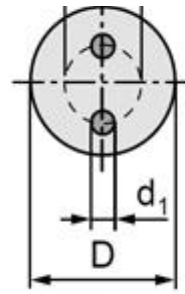


Rods with Central Coolant Hole



Rods with Two Straight Coolant Holes





Rods with 2 Helical Coolant Holes

